

PART OF THE NE.1/4, OF SECTION 27, T.7N., R.1E., S.L.B. & M.

THE RIDGE TOWNHOMES PH 5

IN WEBER COUNTY

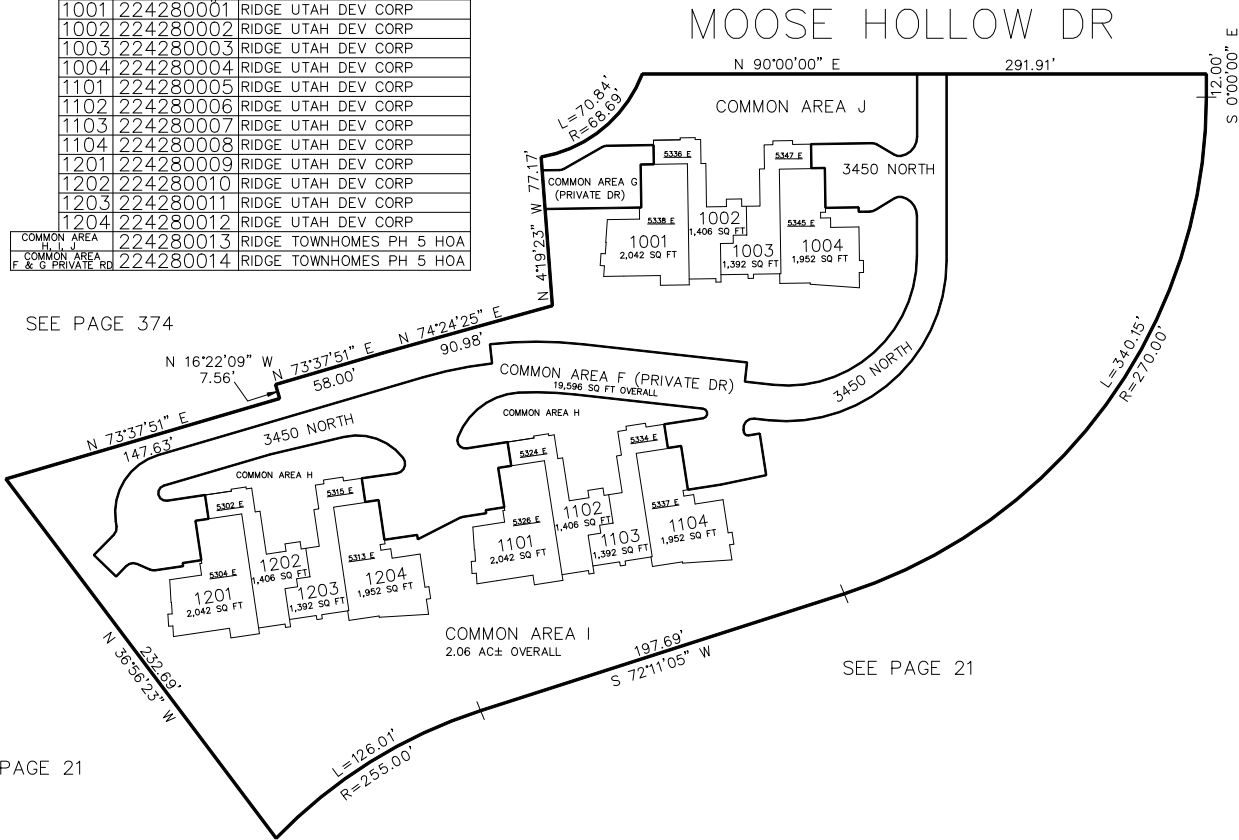
TAXING UNIT: 203

SCALE 1" = 50'

SEE PAGE 344

UNIT	SERIAL #	OWNERSHIP
1001	224280001	RIDGE UTAH DEV CORP
1002	224280002	RIDGE UTAH DEV CORP
1003	224280003	RIDGE UTAH DEV CORP
1004	224280004	RIDGE UTAH DEV CORP
1101	224280005	RIDGE UTAH DEV CORP
1102	224280006	RIDGE UTAH DEV CORP
1103	224280007	RIDGE UTAH DEV CORP
1104	224280008	RIDGE UTAH DEV CORP
1201	224280009	RIDGE UTAH DEV CORP
1202	224280010	RIDGE UTAH DEV CORP
1203	224280011	RIDGE UTAH DEV CORP
1204	224280012	RIDGE UTAH DEV CORP
COMMON AREA H, J	224280013	RIDGE TOWNHOMES PH 5 HOA
COMMON AREA F & G PRIVATE DR	224280014	RIDGE TOWNHOMES PH 5 HOA

SEE PAGE 374



SEE PAGE 21

10' UTILITY & DRAINAGE EASEMENTS EACH  
SIDE OF PROPERTY LINES AS INDICATED  
BY DASHED LINES EXCEPT AS OTHERWISE  
SHOWN.

FOR COMPLETE SURVEY DATA SEE  
ORIGINAL DEDICATION PLAT IN  
BOOK 98, PAGE 35-38 OF RECORDS.